

HID[®] Lumidigm[®] V-Series Smart Line

Robust security with exceptional user convenience for real world applications

You don't need to sacrifice security for user convenience any longer. HID patented Multispectral Imaging (MSI) captures surface and subsurface biometric details enabling you to deliver a superior user experience without sacrificing security. HID MSI enables you to throttle up security settings without the worry of increased false rejections and user complaints. MSI stops buddy punching, the renting or sharing of a badge or a biometric, fake biometric enrollment, and the use of a stolen badge or biometric. MSI delivers the best of both worlds with high security and high user satisfaction.

The V-Series Smart Line provides onboard template storage for 1:1 and 1:N matching and is available in a USB desktop version and an OEM module for integration into a variety of devices.

DELIVER A SUPERIOR USER EXPERIENCE

Patented MSI technology ensures that every user is properly enrolled and quickly matched, no matter the quality of their fingerprint (extra dry, wet, oily, dirty, aged or damaged)

REDUCE FINANCIAL LOSSES

HID's market leading presentation attack detection accurately and consistently identifies and rejects fake finger attempts

INCREASE USER THROUGHPUT

The capture of surface and subsurface fingerprint data significantly reduces false rejections for faster user throughput

HID PATENTED MSI WORKS ON THE MOST DIFFICULT FINGER TYPES



HID MSI ensures users have a fast, single-touch experience and authorized users are not falsely rejected.



V520



V521

KEY BENEFITS:

- **ISO Presentation Attack Detection Level 2** – detects and rejects sophisticated fake finger attempts
- **Patented HID Multispectral Imaging Technology** – captures the most difficult finger types reducing false rejections and failure to enroll
- **Sealed Ruggedized Housing** – built to last in harsh environments
- **Hard Glass Platen** – withstands harsh cleaning chemicals and prevents increasing false rejections over time due to platen degradation from high-touch volumes
- **Onboard Database and Matching** – liveness detection, template creation, template storage and matching (1:1/1:N) all performed on the fingerprint reader

**HID Lumidigm V-Series Smart Line
V520 OEM Module**

**HID Lumidigm V-Series Smart Line
V521 USB Desktop Reader**



V520-01-01

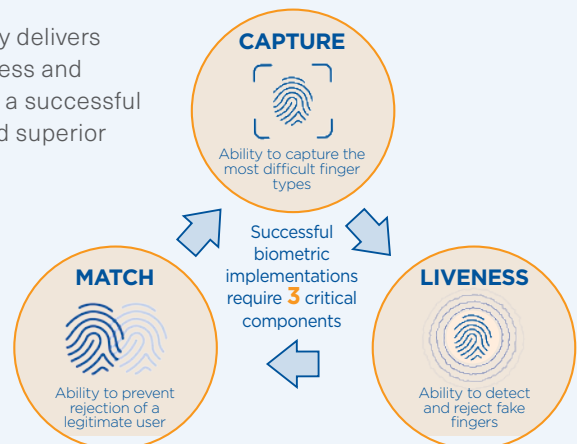
V521-01-01

FINGERPRINT IMAGING SYSTEM	
Technology	Patented Lumidigm® Multispectral Imaging (MSI)
Output image resolution / bit depth	500 dpi / 8-bit, 256 grayscale
Platen area	0.7" x 1.1" (17.8mm x 27.9mm) ellipse; durable, chemical resistant glass (no coatings to wear out)
BIOMETRIC FUNCTIONS	
Image output format	Uncompressed or WSQ compressed images (FBI Certified)
Template output format	ANSI 378 and ISO 19794-2 compliant (MINEX III certified)
Presentation Attack Detection (PAD)	ISO/IEC 30107-3, Level 2 Presentation Attack Detection (PAD) certified Multispectral Imaging (MSI) Live Finger Detection (LFD)
On board database and matching	On-Board template storage: 100.000 templates (1:1) or 75.000 templates (1:N; 5.000 users, 5 fingers per user, 3 templates per finger). Matching 1:1 and 1:N On-Fingerprint Reader
Latent protection	User Configurable
ENVIRONMENTAL RANGE	
Temperature	-10 to 60°C (operating, with enclosure)
Humidity	0 – 95% RH (operating, with enclosure)
ESD Immunity	IEC 61000-4-2 level 4 (+/-15kV air discharge, 8kV contact discharge)
INTERFACE	
USB	USB 2.0 high speed (480 Mbps), Mini B connector USB 2.0 high speed (480 Mbps), 2m USB cable
USB BUS Protection	Diffie-Hellman key exchange
Operating systems supported	Windows 10/11, WHQL Drivers, Linux PC (32/64-bit) Linux ARM7/8
FORM FACTOR & DURABILITY	
Overall dimensions	2.67"W x 2.85"D x 2.01"H (67.9mm x 72.5mm x 51.2mm) 3.3"W x 3.97"D x 2.33"H (84mm x 100.9mm x 59.2mm)
Enclosure	Glass filled PC Painted magnesium alloy, IP65 rating
Weight	125 grams 290 grams
POWER SUPPLY REQUIREMENTS	
Supply current — operational	+5 VDC, 500 mA (peak)
Supply current — idle	+5 VDC, 210 mA (typical)
STANDARDS COMPLIANCE	
Interoperability	ANSI 378, ISO 19794-2, ISO/IEC 19784-1, MINEX III-certified algorithm, WHQL Drivers
EMC & Safety	CE, FCC, CB, UL
Environmental	REACH, RoHS, WEEE
Ingress	IP65 at the platen IP65



Data subject to change without notice

HID patented, MSI technology delivers market-leading capture, liveness and match functionality to ensure a successful biometric implementation and superior user experience.



hidglobal.com

North America: +1 512 776 9000 | Toll Free: 1 800 237 7769

Europe, Middle East, Africa: +353 91 506 900

Asia Pacific: +852 3160 9800 | Latin America: +52 55 9171 1108

For more global phone numbers click here

© 2023 HID Global Corporation/ASSA ABLOY AB. All rights reserved.

2023-10-06-eat-lumidigm-v-series-smart-line-ds-en

PLT-06126

Part of ASSA ABLOY