

HID® Lumidigm® V-Series Performance Line

Superior capture and match performance for real world conditions

HID patented, multispectral imaging (MSI) technology in a ruggedized housing. Multispectral imaging captures surface and subsurface biometric details enabling you to deliver a superior user experience without sacrificing security. The V-Series is perfect for applications with harsh environments, high-touch volumes or a large user population. The V-Series Performance Line provides fast capture, image out, on-host matching and is available in a USB desktop version and an OEM module for integration into a variety of devices.

DELIVER A SUPERIOR USER EXPERIENCE

Patented MSI technology ensures that every user is properly enrolled and quickly matched, no matter the quality of their fingerprint (extra dry, wet, oily, dirty, aged or damaged)

REDUCE FINANCIAL LOSSES

HID's market-leading presentation attack detection accurately and consistently identifies and rejects fake finger attempts

INCREASE USER THROUGHPUT

The capture of surface and subsurface fingerprint data significantly reduces false rejections for faster user throughput



V310

V311

KEY BENEFITS:

- **ISO Presentation Attack Detection Level 2** – detects and rejects sophisticated fake finger attempts
- **Patented, HID Multispectral Imaging Technology** – captures the most difficult finger types reducing false rejections and failures to enroll
- **Sealed Ruggedized Housing** – Built to last in harsh environments
- **Hard Glass Platen** – Withstands harsh cleaning chemicals and prevents increasing false rejections over time due to platen degradation from high-touch volumes
- **Fast Capture and Image Out** – All biometric processing performed on the host

HID PATENTED MSI WORKS ON THE MOST DIFFICULT FINGER TYPES



HID MSI ensures users have a fast, single-touch experience and authorized users are not falsely rejected.

**HID Lumidigm V-Series Performance Line
V310 OEM Module**

**HID Lumidigm V-Series Performance Line
V311 USB Desktop**



V310-01-01

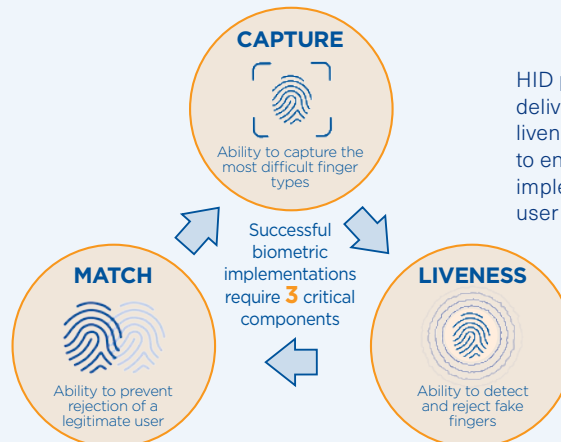


V311-01-01

FINGERPRINT IMAGING SYSTEM	
Technology	Patented Lumidigm® Multispectral Imaging (MSI)
Output image resolution / bit depth	500 dpi / 8-bit, 256 grayscale
Platen area	0.7" x 1.1" (17.8mm x 27.9mm) ellipse; durable, chemical resistant glass (no coatings to wear out)
BIOMETRIC FUNCTIONS	
Image output format	Uncompressed or WSQ compressed images (FBI Certified)
Template output format	ANSI 378 and ISO 19794-2 compliant (MINEX III certified)
Matching	1:1 and 1:N On-Host
Latent protection	User Configurable
SECURITY FEATURES	
Presentation Attack Detection (PAD)	ISO/IEC 30107-3, Level 2 Presentation Attack Detection (PAD) certified Multispectral Imaging (MSI) Live Finger Detection (LFD)
ENVIRONMENTAL RANGE	
Temperature	-10 to 60°C (operating, with enclosure)
Humidity	10 – 95% RH (operating, with enclosure)
ESD Immunity	IEC 61000-4-2 level 4 (+/-15kV air discharge, +/-8kV contact discharge).
INTERFACE	
USB	USB 2.0 high speed (480 Mbps), Mini B connector USB 2.0 high speed (480 Mbps), 2m USB cable
Operating systems supported	Windows 10/11, WHQL Drivers, Linux PC (32/64-bit) Linux ARM7/8
FORM FACTOR & DURABILITY	
Overall dimensions	2.67"W x 2.85"D x 2.01"H (67.9mm x 72.5mm x 51.2mm) 3.3"W x 3.97"D x 2.33"H (84mm x 100.9mm x 59.2mm)
Enclosure	Glass filled PC Painted magnesium alloy, IP65 rating
Weight	105 grams 280 grams
POWER SUPPLY REQUIREMENTS	
Supply current — operational	+5 VDC, 500 mA (peak)
Supply current — idle	+5 VDC, 210 mA (typical)
STANDARDS COMPLIANCE	
Interoperability	ANSI 378, ISO 19794-2, ISO/IEC 19784-1, MINEX III-certified algorithm, WHQL Drivers
EMC & Safety	CE, FCC, CB, UL
Environmental	REACH, RoHS, WEEE
Ingress	IP65 at the platen IP65



Data subject to change without notice



HID patented, MSI technology delivers market-leading capture, liveness and match functionality to ensure a successful biometric implementation and superior user experience.



hidglobal.com

North America: +1 512 776 9000 | Toll Free: 1 800 237 7769

Europe, Middle East, Africa: +353 91 506 900

Asia Pacific: +852 3160 9800 | Latin America: +52 55 9171 1108

For more global phone numbers click here

© 2023 HID Global Corporation/ASSA ABLOY AB. All rights reserved.

2023-10-02-eat-lumidigm-v-series-performance-line-ds-en_PLT-06127

Part of ASSA ABLOY